

New Jersey SkillsUSA Championships

2018 Welding Fabrication

Safety: Number One Priority

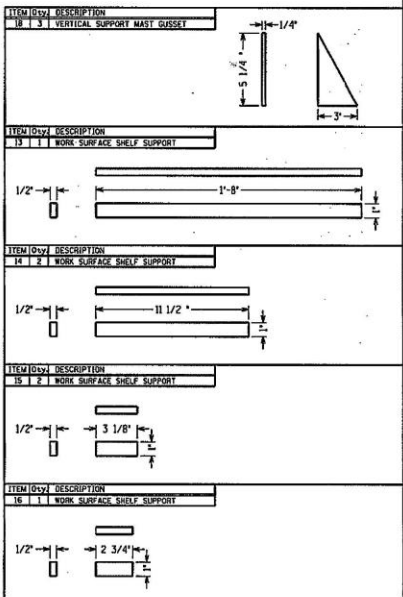
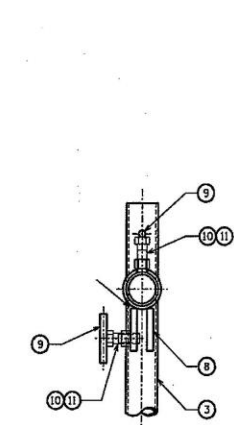
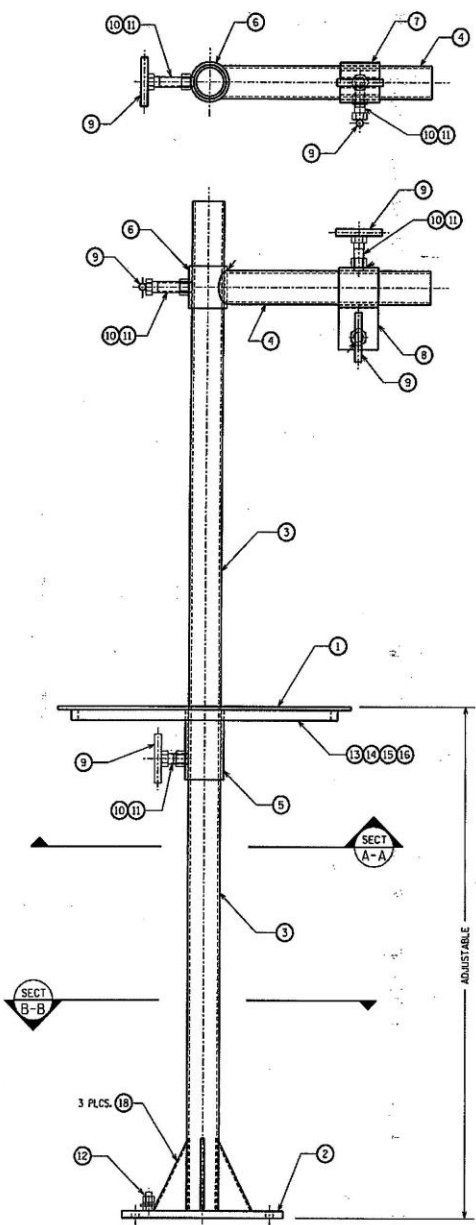
Date: Saturday, March 17, 2018

Report Time: 9:00 AM

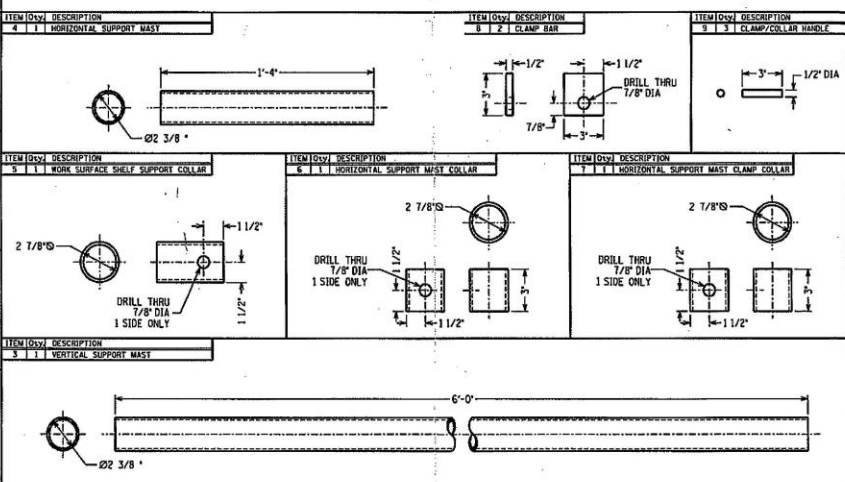
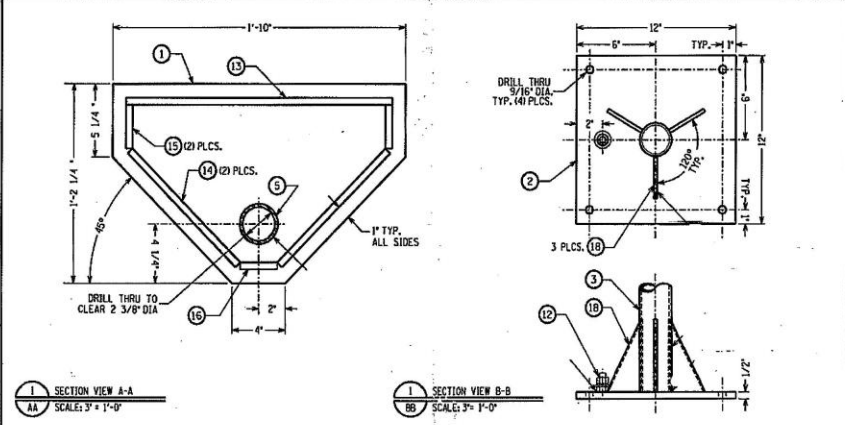
Location: Burlington Co.Tech, Medford Campus, 10 Hawkin Road, Medford, NJ 08055

Competition Update

- All Schools shall supply all required PPE, hand tools and material to complete the project.
 - All material shall be checked the day of the competition prior to starting.
 - The following items shall be cut to size and drilled prior to the competition.
Item Number: 3,4,5,6,7,9,
 - The following items shall be fabricated the day of competition.
Item Number: 1,2,8,10,11,12,13,14,15,16 & 18.
 - Welding details and welding processes will be released the day of the competition.
- Note: No grinders shall be used.



BILL OF MATERIAL			
NO.	QTY.	DESCRIPTION	MATERIAL
1	1	WORK SURFACE SHELF - 14 1/4" x 22" x 1/4" THK STL PLT	CRS
2	1	SUPPORT MAST BASE PLATE - 12" x 12" x 1/2" THK STL PLATE	CRS
3	1	VERTICAL SUPPORT MAST - 2" DIA SCHEDULE 40 x 72" LG STL TUBE	STL TUBE
4	1	HORIZONTAL SUPPORT MAST - 2" DIA SCHEDULE 40 x 16" LG STL TUBE	STL TUBE
5	1	WORK SURFACE SHELF SUPPORT COLLAR - 2-1/2" DIA SCHEDULE 40 x 3" LG STL TUBE	STL TUBE
6	1	HORIZONTAL SUPPORT MAST COLLAR - 2-1/2" DIA SCHEDULE 40 x 3" LG STL TUBE	STL TUBE
7	1	HORIZONTAL SUPPORT MAST CLAMP COLLAR - 2-1/2" DIA SCHEDULE 40 x 3" STL TUBE	STL ANG
8	2	CLAMP BAR - 3" x 3" x 1/2" THK STL PLATE	CRS
9	4	CLAMP/COLLAR ASSY HANDLE - 1/2" DIA x 3" LG STL ROD	STL ROD
10	4	HEX HEAD CAP SCREW - 3/4" - 10UNC x 2" LG	STOCK
11	4	HEX HEAD NUT (HEAVY) - 3/4" - 10UNC	STOCK
12	1 EA	HEX HEAD CAP SCREW - 1/2" - 13UNC x 1" LG, HEX HEAD NUT - 1/2" - 13UNC, FLAT WASHER, LOCK WASHER	STOCK
13	1	WORK SURFACE SHELF SUPPORT - 1/2" THK x 1" x 20" LG	CRS
14	2	WORK SURFACE SHELF SUPPORT - 1/2" THK x 1" x 11 1/2" LG	CRS
15	2	WORK SURFACE SHELF SUPPORT - 1/2" THK x 1" x 3 1/8" LG	CRS
16	1	WORK SURFACE SHELF SUPPORT - 1/2" THK x 1" x 2 3/4" LG	CRS
17	4	1/2" x 3" CONCRETE ANCHOR BOLTS (NOT SHOWN)	STOCK
18	3	VERTICAL SUPPORT MAST GUSSET - 1/4" THK STL PLATE (SEE DETAIL)	CRS



FOR REFERENCE FILES PLEASE USE SHEETS:
GW-2009-XXX GW-2009-XXX

REV	DATE	DESCRIPTION	BY	DATE	DESCRIPTION
A					
B					
C					
D					
E					
F					

NAME	RES.	MATERIAL	SIZE	REMARKS
MACH				
THE LINCOLN ELECTRIC CO., CLEVELAND, OHIO ATLANTA D.C. WELD BOOTH STAND & SHELF ASSEMBLY & DETAILS DRAWN: J. SCHMIDT DATE: 2/27/88 SCALE: 3" = 1'-0" CHECKED: E.J.C. DATE: 2/27/88 SCALE: 3" = 1'-0" WORK FILE: GW-2009-014				

FILE COPY

New Jersey SkillsUSA Championships

2018 Welding Fabrication

Bill Of Material

	Qty.	Description	Material
	1	14 ¼" X 22" X ¼" Thick Plate	Plate
	1	12" X 12" X ¼" Thick Plate	Plate
	1	16" X 16" X ½" Thick Plate	Plate
	1	1" X 72" X ½" Thick Flat Bar	Flat Bar
	2	3" X 3" X ½" Thick Plate	Plate
	1	2" Dia Schedule 40 X 72" Long Steel Tube	Steel Tube
	1	2" Dia Schedule 40 X 16" Long Steel Tube	Steel Tube
	1	2 ½" Dia Schedule 40 X 5" Long Steel Tube	Steel Tube
	2	2 ½" Dia Schedule 40 X 3" Long Steel Tube	Steel Tube
	4	½" Dia X 3" Long Steel Rod	Steel Rod
	4	Hex Head Cap Screws ¾" 10 UNC X 2" Long	Stock
	4	Hex Head Nuts (Heavy) ¾" 10 UNC.	Stock
	1 ea	Hex Head Cap Screws ½" 13 UNC X 1" Long/ Hex Nut: ½ " 13 UNC/ Flat & Lock Washer	Stock
		NOTE: All Material shall be Carbon Steel	

New Jersey SkillsUSA Championships

2018 Welding Fabrication

Cut List

No	Qty	Description	Material
1	1	Work Surface Shelf: < Fabricated Day Of Competition >	CRS
2	1	Support Mast Base Plate: < Fabricated Day Of Competition >	CRS
3	1	Vertical Support Mast: 2" Dia Schedule 40 X 72" Long SteelTube.	Steel Tube
4	1	Horizontal Support Mast: 2" Dia Schedule 40 X 16" Long SteelTube.	Steel Tube
5	1	Work Surface Shelf Support Collar: 2 1/2" Dia Schedule 40 X 5" Long Steel Tube.	Steel Tube
6	1	Horizontal Support Mast Collar: 2 1/2" Dia Schedule 40 X 3" Long Steel Tube.	Steel Tube
7	1	Horizontal Support Mast Clamp Collar: 2 1/2" Dia Schedule 40 X 3" Long Steel Tube.	Steel Tube
8	2	Clamp Bar: < Fabricated Day Of Competition >	CRS
9	4	Clamp / Collar Assy Handle: 1/2" Dia X 3" Long Steel Rod.	Steel Rod
10	4	Hex Head Cap Screws: <Fabricated Day Of Competition >	Stock
11	4	Hex Head Nuts { Heavy }: <Fabricated Day Of Competition >	Stock
12	1 Ea	Hex Head Cap Screws: <Fabricated Day Of Competition >	Stock
13	1	Work Surface Shelf Support: < Fabricated Day Of Competition >	CRS
14	2	Work Surface Shelf Support: < Fabricated Day Of Competition >	CRS
15	2	Work Surface Shelf Support: < Fabricated Day Of Competition >	CRS
16	1	Work Surface Shelf Support: <Fabricated Day Of Competition >	CRS
17	4	Anchor Bolts: 1/2" X 3" { Not Shown }	
18	3	Vertical Support Mast Gussets: < Fabricated Day Of Competition >	CRS
< Key >		Note: Item Numbers: 3,4,5,6,7 & 9 Shall be cut to size and drilled prior to the comp.	
< Key >		Note: Item Numbers: 1,2,8,10,11,12,13,14,15,16 &18 Shall be fabed the day of the comp.	